

**ICC Evaluation Service, Inc.**  
[www.icc-es.org](http://www.icc-es.org)

**Business/Regional Office** ■ 5360 Workman Mill Road, Whittier, California 90601 ■ (562) 699-0543  
**Regional Office** ■ 900 Montclair Road, Suite A, Birmingham, Alabama 35213 ■ (205) 599-9800  
**Regional Office** ■ 4051 West Flossmoor Road, Country Club Hills, Illinois 60478 ■ (708) 799-2300

**DIVISION: 09—FINISHES****Section: 09308—Tile Underlayment and Waterproofing****DIVISION: 015—MECHANICAL****Section: 15451—Shower Pan Liners****REPORT HOLDER:**

**LATICRETE INTERNATIONAL, INC.**  
1 LATICRETE PARK NORTH  
BETHANY, CONNECTICUT 06524-3423  
(800) 243-4788  
[www.laticrete.com](http://www.laticrete.com)

**EVALUATION SUBJECT:****LATICRETE® HYDRO BAN™****1.0 EVALUATION SCOPE****Compliance with the following codes:**

- 2006 *International Residential Code*® (IRC)
- 2006 *International Plumbing Code*® (IPC)
- Other Codes (see Section 8.0)

**Property evaluated:**

Waterproofing

**2.0 USES**

LATICRETE® Hydro Ban™ is a cold liquid-applied waterproofing system that cures to a monolithic elastomeric membrane for use on concrete floors as a barrier to liquid-water migration in bonded thin-set installations of ceramic tiles and dimension stone. The membrane is also used as a shower lining in accordance with Section 417.5.2 of the IPC; and as a lining material in accordance with Section P2709.2 of the IRC.

**3.0 DESCRIPTION****3.1 LATICRETE® Hydro Ban™:**

LATICRETE® Hydro Ban™ is a ready-to-use, 70-percent-solids, formulated, styrene copolymer latex, packaged in 1-gallon (3.8 L), 2-gallon (7.6 L) and 5-gallon (18.9 L) pails. Shelf life is two years from the date of manufacture when stored in unopened containers at temperatures between 32°F and 110°F (0°C and 43°C).

**3.2 Sealant:**

LATICRETE® Latasil™ Tile and Stone Sealant is a silicone sealant used to seal around penetrations in LATICRETE® Hydro Ban™. The sealant is provided in 10.3-ounce (305 mL) cartridges.

**4.0 INSTALLATION****4.1 General:**

Installation must comply with this report, the applicable code and the manufacturer's published installation instructions. The manufacturer's published installation instructions must be available at the jobsite at all times during installation.

**4.2 Surface Preparation:**

Concrete substrates must be clean, free of oils, greases, and other contaminants, and be between 45°F and 90°F (7°C and 32°C) prior to application of the membrane. Dry or dusty surfaces must be dampened and swept off. Maximum deviation in plane must not exceed 1/4 inch (6.4 mm) in 10 feet (3048 mm). New concrete must be structurally sound prior to application of the membrane.

**4.3 Membrane Application:**

LATICRETE® Hydro Ban™ is applied, with a roller or brush, to the concrete in two coats at a coverage rate of 1 gallon per 50 square feet (0.2 L/m<sup>2</sup>) each. The base coat must dry a minimum of two hours before application of the top coat. The top coat must be allowed to dry a minimum of 24 hours at 70°F (21°C) and 50 percent relative humidity before application of ceramic tile or dimension stone. The approximate dry thickness of the membrane is 20 to 30 mils [0.02 to 0.03 inch (0.5 to 0.8 mm)]. Ceramic tile must comply with ANSI A137.1. See Figure 1 for typical installation details.

**4.4 Application over Joints:**

LATICRETE® Hydro Ban™ must not be installed over structural cracks with vertical movement, or cracks with greater than 1/8 inch (3.2 mm) horizontal movement. Surface cracks, cold joints, expansion joints and control joints must be pretreated with one application, approximately 8 inches (200 mm) wide, of a dry thickness of 20 to 30 mils [0.02 to 0.03 inch (0.5 to 0.8 mm)] of LATICRETE® Hydro Ban™. The pretreatment application must dry a minimum of two hours before the membrane described in Section 4.3 is applied.

**4.5 Application on Drains:**

Drains must have a clamping ring with open weep holes in accordance with ANSI A112.21.1. A pretreatment of a dry thickness of 20 to 30 mils [0.02 to 0.03 inch (0.5 to 0.8 mm)] of LATICRETE® Hydro Ban™ is applied around and over the bottom half of the drain clamping ring. The pretreatment application must dry for a minimum of two hours before an approved thick-bed mortar is applied to set the drain. When the mortar bed is dry, the membrane described in Section 4.3 is applied. After the membrane has dried for a minimum of two hours, a bead of LATICRETE® Latasil™ Tile and Stone Sealant is applied where the membrane meets the drain throat. The top half of the drain clamping ring is then installed.

#### 4.6 Application on Penetrations:

Any gaps around pipes or other penetrations are packed with a compressible backer rod. A pretreatment of a dry thickness of 20 to 30 mils [0.02 to 0.03 inch (0.5 to 0.8 mm)] of LATICRETE® Hydro Ban™ is applied around the penetration opening. The pretreatment application must dry a minimum of two hours before the membrane described in Section 4.3 is applied. After the membrane has dried for a minimum of two hours, the flashing is sealed with LATICRETE® Latasil™ Tile and Stone Sealant.

#### 5.0 CONDITIONS OF USE

The LATICRETE® Hydro Ban™ described in this report complies with, or is an acceptable alternative to what is specified in, those codes listed in Section 1.0 of this report, subject to the following conditions:

- 5.1 Installation must comply with this report, the manufacturer's published installation instructions and the applicable code. In the event of a conflict between the manufacturer's published installation instructions and this report, this report governs.
- 5.2 Application is limited to ceramic tile and dimension stone installations on concrete floors, use as shower linings, or over surface cracks or joints with up to  $\frac{1}{8}$  inch (3.2 mm) horizontal movement and no vertical differential movement.

#### 6.0 EVIDENCE SUBMITTED

Data in accordance with the ICC-ES Acceptance Criteria for Waterproof Membranes for Flooring and Shower Lining (AC115), dated June 2003 (editorially revised April 2005).

#### 7.0 IDENTIFICATION

Each container of the LATICRETE® Hydro Ban™ described in this report must be identified by a label bearing the manufacturer's name (Laticrete International, Inc.), the product type and the evaluation report number (ESR-2417).

#### 8.0 OTHER CODES

##### 8.1 Evaluation Scope:

The product in this report was also evaluated for compliance with the requirements of the following codes:

- BOCA® *National Building Code/1999* (NBBC)
- 1999 *Standard Building Code*® (SBC)
- 1997 *Uniform Building Code*™ (UBC)

##### 8.2 Uses:

LATICRETE® Hydro Ban™ is a cold liquid-applied waterproofing system that cures to a monolithic elastomeric membrane for use on floors as a barrier to liquid-water migration in bonded thin-set installations of ceramic tiles and dimension stone. The membrane is also used as a shower lining or as a lining material in accordance with the applicable code.

##### 8.3 Description:

See Section 3.0.

##### 8.4 Installation:

See Section 4.0.

##### 8.5 Conditions of Use:

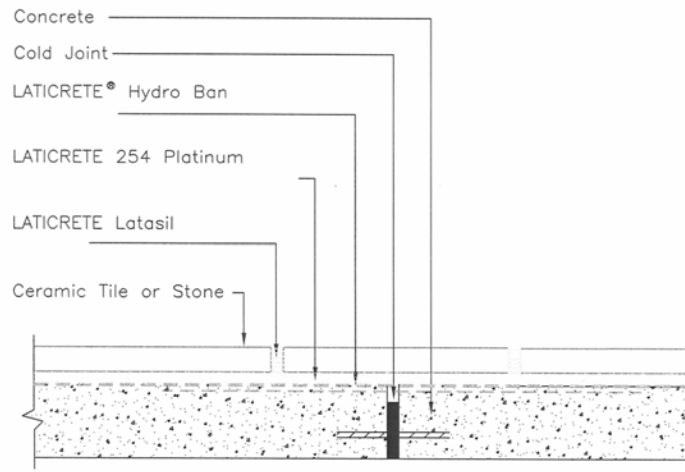
See Section 5.0.

##### 8.6 Evidence Submitted:

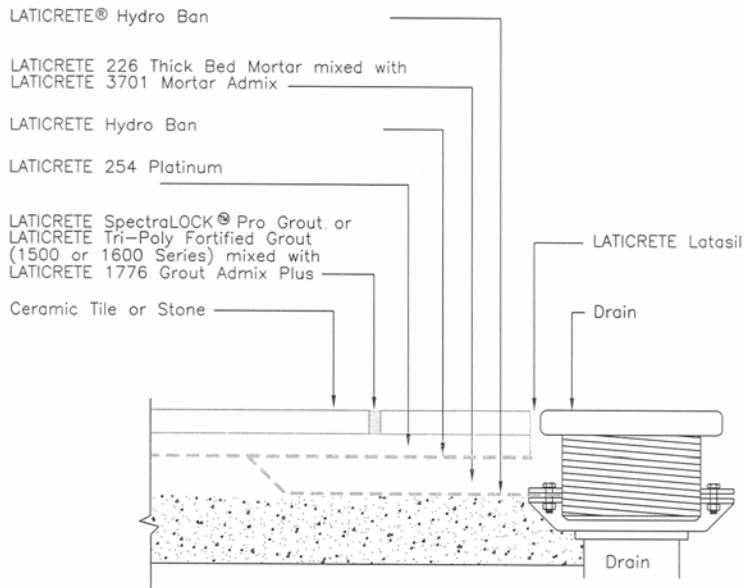
See Section 6.0.

##### 8.7 Identification:

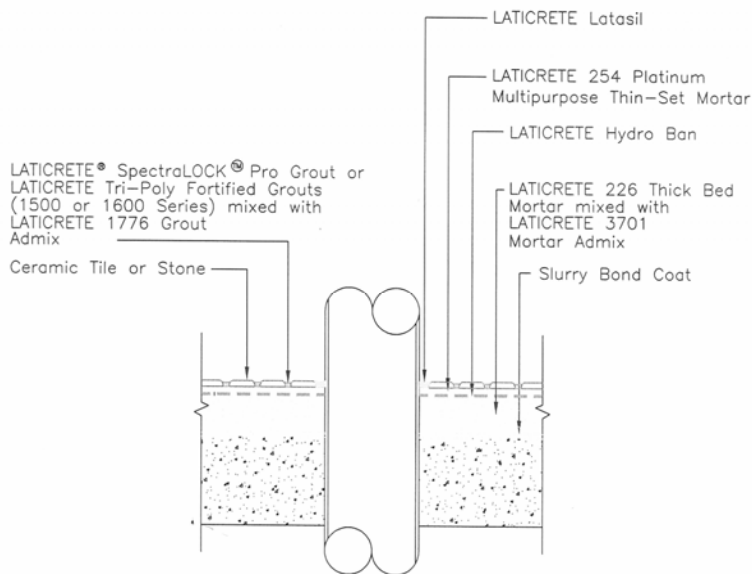
See Section 7.0.



**Cold Joint**



**Drain**



**Pipe Penetration**

**FIGURE 1**